

- **Reduces Shipping Errors**  
**“You should have Shipped It COD”**
- **Imports UPS Service Type**  
**directly from Mas90 Sales Order**
- **Know “Exactly” when your Orders**  
**were shipped.**
- **Significant savings in Data Entry**  
**Time. Eliminates Repetition.**



### ***Import Capability***

*(to UPS WORLDSHIP by Scanning Sales Order#)*

- Sales Order #
- Invoice #
- Customer Ship To
- UPS Service Type
- Two Reference Fields
- Email Address for  
Shipment Notification.

### ***Write Back Functionality***

*(To MAS90)*

- Freight Amount
- Tracking Numbers
- Weight
- Package Type
- Fast Track Mapping

*Standard mapping to/from Mas90/200*



***For more information, or to acquire this Product, Please contact your MAS90/MAS200 Consultant, or***

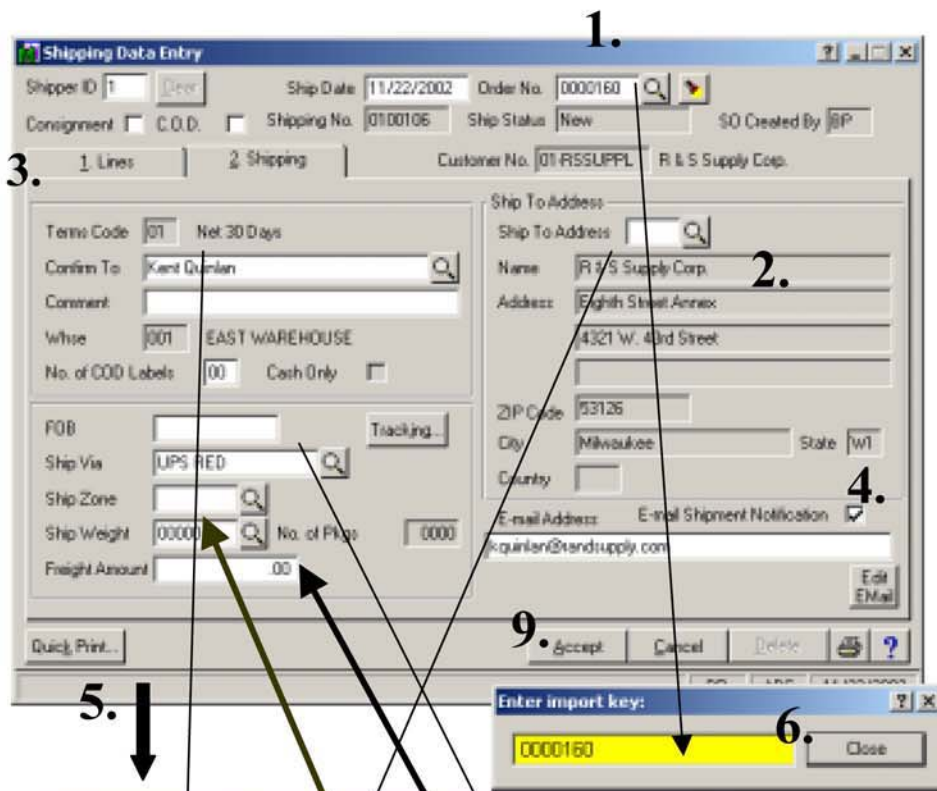
L. Kianoff & Associates, Inc.  
1128 22nd Street South  
Birmingham, AL 35205

Phone: 205-592-9990 Fax: 205-592-9991  
<http://www.kianoff.com>

# Nine Easy Steps to Shipping Integration

## Mas90 Shipping Data Entry

1. Scan or Enter Order # From Shipping Document.
2. Verify Ship Address
3. Go to Lines, Scan, or Enter each item to be shipped or Ship Complete.
4. Verify Email Notification Flag and Email Address
5. Leave order open in Mas90 and Go to UPS Screen.



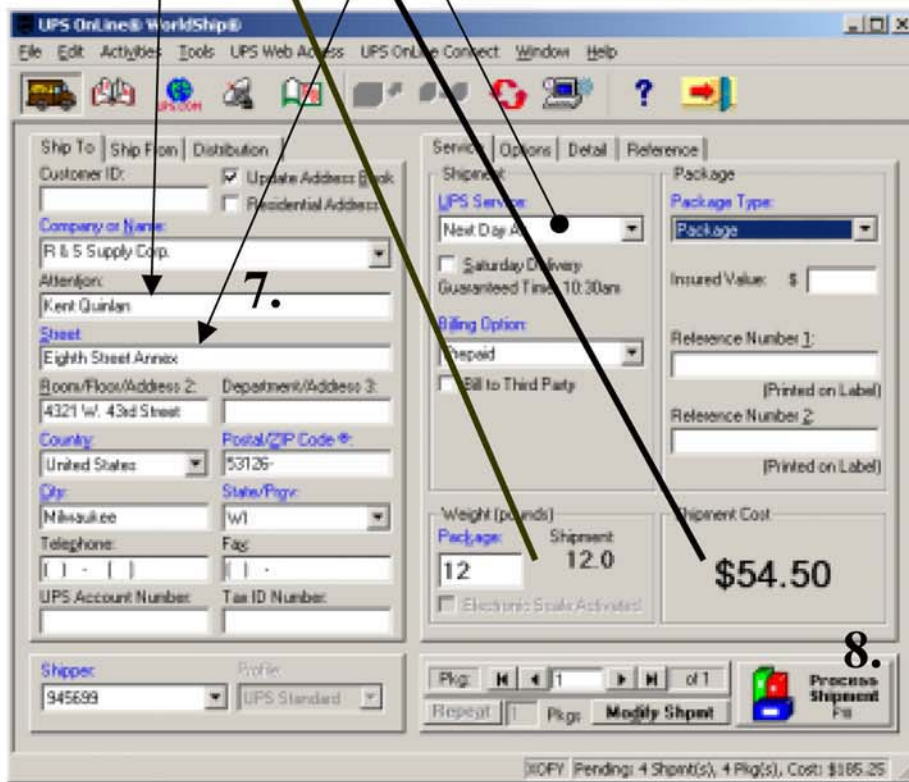
## UPS WORLDSHIP

6. Scan or enter Sales Order # off Shipping Document
7. UPS will import Shipping Information.
8. Process Package as you normally would in UPS.

## Mas90 Shipping Data Entry

9. Go to Mas90 Shipping Screen and accept the order.

*Your shipment has now been processed. Tracking numbers, Optional Freight Amount, Handling Charges, and Weight have been written back to MAS90 and an Invoice record has been generated for subsequent Audit and/or Printing.*



**For more information, or to acquire this Product, Please contact your MAS90/MAS200 Consultant, or**

L. Kianoff & Associates, Inc.  
1128 22nd Street South  
Birmingham, AL 35205

Phone: 205-592-9990 Fax: 205-592-9991  
<http://www.kianoff.com>